

STSC Members

In order to conduct our meetings correctly, there **must be a physical quorum present at the in-person meetings**, in order to vote in allowance for those members to participate via Zoom.

The in-person meeting will be held at 310 Court Street, Clearwater, FL. Maria Kelly (mkelly@forwardpinellas.org) will need **confirmation from those of you who will be attending in person, so that a quorum can be confirmed**. If you confirm and cannot make it, please reach out to her so that a back-up can be found. Without a quorum, we cannot vote in the Zoom attendees.

If you will be attending by Zoom, here is the Zoom meeting information:

Topic: School Transportation Safety Committee Meeting (STSC) 9:00 am

Time: Oct 6, 2021 09:00 AM Eastern Time (US and Canada)

<https://us02web.zoom.us/j/88213075771?pwd=M3c3UFVkb29RV0Fzc0s2NTZ3aFBHZz09>

Meeting ID: 882 1307 5771

Passcode: 151998

One tap mobile

+1-646-876-9923 88213075771#,,,,*151998# US (New York)

+1-301-715-8592 88213075771#,,,,*151998# US (Washington DC)



SCHOOL TRANSPORTATION SAFETY COMMITTEE (STSC) AGENDA

October 6, 2021 – 9:00 a.m.

310 Court Street, 1st Floor
Planning Conference Room
Clearwater, FL 33756

THE PLANNING COUNCIL AND METROPOLITAN PLANNING ORGANIZATION FOR PINELLAS COUNTY

FACE MASKS ARE ENCOURAGED, BUT ARE NOT REQUIRED

1. **CALL TO ORDER AND INTRODUCTIONS**
2. **APPROVAL OF MINUTES**
3. **PINELLAS COUNTY COMPREHENSIVE PLAN**
4. **SCHOOL TRANSPORTATION AND ENHANCED PEDESTRIAN SAFETY (STEPS) COMMITTEE**
5. **COVID-19 AND SCHOOL TRANSPORTATION SAFETY ISSUES**
6. **OTHER BUSINESS**
 - A. Crash Data Analysis
 - B. Hazardous Waling Routes Assessment
 - C. SPOTLight Emphasis Area Update –
 - D. STEPS Program – Minutes
 - E. Safe Routes to School
 - F. Request for Future Agenda Topics
7. **ADJOURNMENT**

Next Meeting: MARCH 2, 2022

Public participation is solicited without regard to race, color, national origin, age, sex, religion, disability, or family status. Persons who require special accommodations under the Americans with Disabilities Act or persons who require translation services (free of charge) should contact the Office of Human Rights, 400 South Fort Harrison Avenue, Suite 300, Clearwater, Florida 33756; [(727) 464-4062 (V/TDD)] at least seven days prior to the meeting.

Appeals: Certain public meetings result in actions taken by the public board, commission or agency that may be appealed; in such case persons are advised that, if they decide to appeal any decision made at a public meeting/hearing, they will need a record of the proceedings, and, for such purposes, they may need to ensure that a verbatim record of the proceedings is made, which record includes the testimony and evidence upon which the appeal is to be based.

Forward Pinellas is committed to making our documents accessible to all audiences. If you have accessibility concerns, please contact [aelmore@forwardpinellas.org](mailto:aelm@forwardpinellas.org) or call 727-464-4880. Visit <https://forwardpinellas.org/legal/website-accessibility-statement/> for more information.

School Transportation Safety Committee – October 6, 2021

2. Approval of Minutes



SUMMARY

The meeting summary for the March 3, 2021 and June 2, 2021 meeting is attached for review and approval.

ATTACHMENT(S):

STSC Meeting Summary – March 3, 2021

STSC Meeting Summary – June 2, 2021

ACTION: Approval of Meeting Summaries

**SUMMARY OF SCHOOL TRANSPORTATION SAFETY COMMITTEE
MEETING OF MARCH 3, 2021**

The meeting was held on Wednesday, March 3, 2021, at 9:00 a.m., in the 1st Floor Planning Department Conference Room. Those in attendance were:

Members Present:

Bill Dudley, Chair	Pinellas County School Board
Carol Cook, Vice-Chair - Zoom	Pinellas County School Board
Karen Seel	Commissioner, Pinellas County (BCC)
Deborah Kynes	Commissioner, City of Dunedin
Terry Huberty	Pinellas County School Board
Caroline Lanford	Pinellas County Planning
Doug Mullis	Citizen Representative
Cliff Merz - Zoom	Commissioner, City of Safety Harbor
Casey Morse	Pinellas County Public Works Traffic
Joshua Shulman	PSTA
Marshall Touchton - Zoom	Pinellas County School Board

Members Absent:

John Carroll	Commissioner, City of Largo
Roger Edelman	Councilmember, City of Seminole
Jacob Karr	Commissioner, City of Tarpon Springs
Kathleen Beckman	Councilmember, City of Clearwater
Keith Sabiel	Councilmember, City of Pinellas Park

Others Present:

Matt Atwell	Pinellas County School Board
Joseph Camera	Pinellas County School Board
Heather Sobush - Zoom	PSTA
Tom Shelly - Zoom	Guest
Lorraine Duffy-Suarez - Zoom	Guest
Jeanne Bytell - Zoom	Guest
Doug Williams - Zoom	Guest
Joan Rice	Pinellas County Public Works Traffic
Austin Britt - Zoom	Forward Pinellas Staff
Angela Ryan - Zoom	Forward Pinellas Staff
Chelsea Favero - Zoom	Forward Pinellas Staff
Sandra Knoebel	Forward Pinellas Staff
Maria Kelly	Forward Pinellas Staff

1. **CALL TO ORDER**

Bill Dudley, Pinellas County School Board, called the meeting to order at 9:00 a.m. and asked attendees to introduce themselves.

2. **APPROVAL OF MINUTES**

Josh Shulman motioned approval of the summary of the March 4, 2020 meeting, seconded by Doug Mullis and the vote passed unanimously.

3. **STSC BYLAWS**

Ms. Chelsea Favero, Forward Pinellas Manager, addressed the committee regarding the minor changes to the bylaws to bring them up to date. These changes were proposed to clarify that the voting membership of the STSC is to be elected officials, one citizen representative and one appointed representative from PSTA, while also expanding the participation of non-voting technical support members. This expansion for non-voting members will allow for any local agency staff with a vested interest in school transportation safety to fully participate in the STSC without a limit. Questions were taken and appropriately answered. Josh Shulman made a motion to approve the change to the by-laws. This was seconded by Deborah Kynes and passed with a unanimous vote.

4. **SCHOOL BOARD RELATED ITEMS**

Ms. Sandra Knoebel provided an update for the committee on the problem with motorists passing school buses stopped to load children, with their stop traffic lights and signs out. Mr. Joseph Camera stated there has been a decrease in violations since the start of COVID in March 2020 to current date. There are still select spots where the traffic pattern hasn't changed, and motorists are still running the stop lights, but law enforcement is continuing to monitor. Students are gradually beginning to return to brick and mortar attendance, so the buses are filling up. A suggestion to utilize the message boards to remind motorists to stop for school buses was made, however the County does not control those boards. Casey Morse with Pinellas County Public Works suggested that perhaps the portable signs that are not being used for traffic repairs could be strategically placed near habitual sites as safety reminders. School messenger boards can also be used during morning hours. Cell phone push messages were also suggested, but the key is to reach the distracted drivers. **Commissioner Kynes inquired as to the legality of the push notifications.** Commissioner Seel stated she would check with the County Attorney for an answer and Chair Dudley will check with the School Board. It was suggested to ask Chuck Henson with Bay News 9 Traffic to do a segment on school bus traffic safety as well as using bus wraps on the back of PSTA buses. Health and safety protections have been the priority for the schools and school buses. Buses are provided with masks for students who do not have them. School Board members are impressed with the how the busing is being handled with safety protocols. Schools are requiring masks for all teachers and students and are also disinfecting the schools. The hazardous walking conditions list from last year has been completed. Questions were taken and appropriately answered.

5. **RECTANGULAR RAPID FLASHING BEACONS**

Ms. Angela Ryan, Forward Pinellas Staff, addressed the committee regarding the current status of legislation regarding RRFB's in the Florida Legislature. There are

currently over 400 RRFB's in Pinellas County, with many directly around public school facilities used by students on their way to and from school. The RRFB's has proven to be highly effective in Pinellas County and around the country. Over 80% of drivers will stop for a RRFB when activated by the crosser. Florida law states that vehicles must stop when a pedestrian is attempting to cross the road at any crosswalk, whether is it at a controlled intersection or at mid-block. There are two bills currently in Florida Legislature, Senate Bill 1412 and House Bill 1113, invalidating the existing design for RRFB's and may result in removal of many existing RRFB's due to the inability of government entities to finance required retrofits. The removal of the RRFB's would result in pedestrian crosswalks without the enhancement of flashing lights and additional signage which provides vital signals to motorists to the presence of a pedestrian and their intent to cross the road. Florida law requires motorists to yield to pedestrians when they are using the crosswalk, however, data demonstrates there is low vehicle yielding compliance with the absence of enhancements such as RRFB's. Forward Pinellas is collaborating with other MPO's in the state, local governments, and other organizations on joint opposition regarding these bills. Discussion followed with questions taken and appropriately answered.

6. COVID-19 IMPACTS TO THE TRANSPORTATION SYSTEM

Ms. Ryan shared a presentation with the members sharing the impacts on transportation in Pinellas County since the start of COVID-19. Total crash data reflects a decrease in crashes when comparing 2019 to 2020, with the largest decrease in April 2020 as many people stayed off the roads at the beginning of the pandemic. As people began to venture out more, by October 2020, the crash numbers began to increase. In April 2020, an increase of 3% in crashes involving both intoxication and running control devices (stop signs, red lights, etc.) was seen, but there was a decrease of 148% in crashes involving aggressive driving. By June 2020, there was an increase of 60% of crashes from speeding, but a decrease of 15% from aggressive driving, as compared to 2019. In December 2020 there was an increase of 3% of crashes caused by aggressive driving and a decrease of crashes involving intoxication. Crashes began to increase as people were getting back on the roads by the fall of 2020. With crashes involving pedestrians, there was an overall 60% reduction from 2019 to 2020, as well as an overall reduction of 20% involving bicyclists. There was an overall increase of Pinellas Trail use by 60%. Overall, during the pandemic, people increased the amount of traveling by bicycle and walking, while driving less overall. Questions were taken and appropriately answered.

7. SAFE STREETS PINELLAS

Ms. Sarah Caper, Forward Pinellas Staff, shared a presentation with the committee regarding the Safe Streets Pinellas Action Plan and the next steps. Over the past year, efforts to develop a Safe Streets Action Plan, which is a Vision Zero effort, have been underway. The Action Plan includes collision data analysis, the identification of a High Injury Network (HIN), engineering and non-engineering countermeasures and implementable strategies to move towards zero deaths and serious injuries on Pinellas roadways. A 16-member taskforce with a representative from each committee was instrumental in putting together this Action Plan through demonstration projects, community outreach projects and workshops. The Action Plan will be updated once the demonstration projects are completed and is intended to be evaluated on a regular

basis so adjustments can be made as needed. Questions were taken and appropriately answered

8. PINELLAS COUNTY PUBLIC WORKS SAFETY ACTIVITY BOOK

Joan Rice, Public Works Traffic, shared a presentation with the committee regarding *Move Safe*, a Pinellas program targeting behavior changes and working to influence good habits in bicyclist and pedestrian safety. Developed by Pinellas County Public Works, this program is bringing educational messages, being sent in a number of ways, to Pinellas County residents, especially children, about bike and walking safety. The *Move Safe* activity book tells the story of what kids should know before heading out to bike or walk to school or around the neighborhood. The activity book includes checklists, challenging games and activities and allows kids to test their knowledge. Questions were taken and appropriately answered.

9. PSTA PROGRAM UPDATES

Ms. Heather Sobush, PSTA Planning Director, shared a presentation on PSTA projects. PSTA has taken great measures to assure that all buses are sanitized, are providing masks for riders who do not have their own, have limited their seating, are using rear doors to board and have waived all bus fares. Transit ridership was impacted with a reduction from 32,000 in March 2020 to less than 15,000 in May 2020. Many of the school service routes have been reinstated as schools return to in-person classes. The UPASS program in partnership with several of the colleges that allows students and staff to ride free, is currently on hold as bus fares have been waived for now. Another project currently on hold is a pilot program in partnership with Pinellas County Schools for high schools with students currently assigned to PSTA routes. There are currently 2 electric buses in service with 4 new buses that will be in service soon and 2 additional buses coming through a recently awarded grant. In-route charging stations are a challenge but are currently in the works. SunRunner Bus Rapid Transit is finally being implemented. The stations are being constructed and the service should be running soon. In November 2019, the Downtown St. Petersburg Autonomous Vehicle pilot program was launched. It runs a little slow, but it has been successful. The free service runs Wednesday through Sunday from 10:00 am to 10:00 pm. The route travels down Bayshore Drive from the Vinoy down to the Dali Museum. PSTA's next step is to look into Dunedin and downtown Clearwater for the service. Questions were taken and appropriately answered.

10. OTHER BUSINESS

A. Crash Data Analysis

Reports were provided to the committee.

B. Forward Pinellas Committee Meeting Schedule 2021

Forward Pinellas Meeting Schedule was provided in the agenda packet.

C. Pinellas SPOTlight Emphasis Areas Update

Regarding the Gateway Master Plan, the partners are working on developing a dashboard template to provide visual information for performance measures to show progress. With regards to US19, FDOT provided updates on mitigated measures on

US19, south of Curlew, for a right turn that goes into 274th Street, in an effort to reduce traffic congestion for those making a U-turn or merging. Barriers were set up to protect the bike lane. FDOT will also be providing a presentation on the Frontage Roads Project in May to share updates for this project.

D. **STEPS Program**

Minutes and Agendas were provided in the agenda packets.

E. **Safe Routes to School**

Information on upcoming events for SRTS is provided in the agenda packets.

F. **Requests for Future Agenda Topics**

No suggestions were made for future agenda topics.

G. **Comments**

No suggestions were made at this time.

11. **ADJOURNMENT**

The Committee adjourned at 11:08 am.

**SUMMARY OF SCHOOL TRANSPORTATION SAFETY COMMITTEE
VIRTUAL WORKSHOP OF JUNE 2, 2021**

The virtual workshop was held on Wednesday, June 2, 2021, at 9:00 a.m., via Zoom platform. Those in attendance were:

Members Present:

Carol Cook, Vice-Chair	Pinellas County School Board
Kathleen Beckman	Councilmember, City of Clearwater
Deborah Kynes	Commissioner, City of Dunedin
Caroline Lanford	Pinellas County Planning
Cliff Merz	Commissioner, City of Safety Harbor
Joan Rice	Pinellas County Public Works Traffic
Karen Seel	Commissioner, Pinellas County (BCC)
Joshua Shulman	PSTA
Marshall Touchton	Pinellas County School Board

Members Absent:

Bill Dudley, Chair	Pinellas County School Board
John Carroll	Commissioner, City of Largo
Roger Edelman	Councilmember, City of Seminole
Terry Huberty	Pinellas County School Board
Jacob Karr	Commissioner, City of Tarpon Springs
Doug Mullis	Citizen Representative
Keith Sabiel	Councilmember, City of Pinellas Park

Others Present:

Matt Atwell	Pinellas County School Board
Autumn Westerman	Pinellas County School Board
Carolyn Rudolph Baar	Guest – City of St. Petersburg
Jake Mirabella	Guest
Doug Williams	Guest – City of Clearwater
Angela Ryan	Forward Pinellas Staff
Chelsea Favero	Forward Pinellas Staff
Sandra Knoebel	Forward Pinellas Staff
Maria Kelly	Forward Pinellas Staff

1. CALL TO ORDER

Carol Cook, Vice-Chair, Pinellas County School Board, called the meeting to order at 9:00 a.m. and asked attendees to introduce themselves.

2. APPROVAL OF MINUTES

Approval of the minutes was deferred to October 2021 meeting due to no quorum.

3. FORWARD PINELLAS EDUCATIONAL PROJECT

Ms. Chelsea Favero, Forward Pinellas Manager, shared a presentation with the committee on an education project created by Forward Pinellas staff, “City by Design”. Led by our former University of South Florida intern and former public-school teacher, Austin Britt, this educational curriculum is designed to spur student interest in urban, regional and community planning. Staff is working with Pinellas County Schools to integrate this hands-on, student-centered learning module into high school and middle school classrooms. The City by Design education unit comes complete with step-by-step lesson plans for teachers to follow, all necessary handouts and documents, as well as grading rubrics to allow for simple integration into the teacher’s established curriculum. This educational unit was designed in alignment with the Florida Sunshine State Standards to allow teachers to utilize this tool consistent with state-assessed standards in content areas such as science, math, English/language arts, social studies, technology, and art. Students will complete the first three modules in which they will learn about urban planning topics, such as land use categories and specifications, housing, resilience, transportation, and micromobility, as well as bicycle and pedestrian safety and infrastructure. After completing the three main modules, students will be given the task of proposing a site redevelopment project for Tropicana Field utilizing the knowledge they have gained about urban planning and addressing requested needs from actual stakeholders in a real-world case study. Questions were taken and appropriately answered.

4. EQUITY ASSESSMENT

Ms. Angela Ryan, Forward Pinellas staff, shared a presentation with the members announcing that Forward Pinellas is conducting an equity assessment of its agency operations and planning activities. The goal is to ensure the Forward Pinellas mission to “provide leadership to align resources and plans that help to achieve a compelling vision for Pinellas County, our individual communities and our region” is both inclusionary and equitable. Forward Pinellas will research systems, policies and practices resulting to determine the inequity in Pinellas County. Using this research, a strategic plan to ensure our work is inclusive and results in equitable outcomes for the entire community. The Equity Assessment will be conducted in three phases: Phase 1- Scoping through conducting interviews, researching best practices, and drafting the scope of work. Phase 2- Work Plan through conducting evaluations, identifying opportunities and weaknesses, defining alternatives and recommendations. Phase 3- Implementation through ensuring equity in all policies. The Equity Assessment components will include a high-level timeline for public outreach throughout the process as well as external and internal analyses. Results from the assessment will be brought back to the committee at a future date. Questions were taken and appropriately answered.

5. OTHER BUSINESS

A. Crash Data Analysis

Ms. Sandra Knoebel, Forward Pinellas staff, reported on the Crash Data Analysis and its use with the Hazardous Walking Routes assessment currently being conducted. Traffic volumes have been added as a layer to the crash data analysis for this effort to help determine which routes need immediate attention. This project should be completed soon and will be presented at the next meeting.

B. Pinellas SPOTlight Emphasis Areas Update

Regarding US19 Corridor, Forward Pinellas is continuing to work with the FDOT on a project for the frontage roads along the corridor from Pinellas Park to Dunedin, looking at potential solutions to help retrofit the frontage roads to help make the traffic fit the context of the roadway and the communities along the corridor. We are also working with FDOT to identify solutions north of Tampa Road to mitigate traffic and make the intersections safer for not only traffic, but bicyclists and pedestrians as well. Regarding the Gateway Area Master Plan, working with the local communities in the Gateway Area to develop a dashboard template to provide visual information for performance measures to show progress towards the implementation. The Gateway Area does not have a lot of residents or schools currently, but there is a desire to increase housing and diversify the employment context. Regarding Enhancing Beach Access, the adoption of the new priority list for transportation priorities includes funding for both the Cross-Bay Ferry and additional ferry service for northern Pinellas County.

C. STEPS Program

Minutes and Agendas were provided in the agenda packets.

D. Safe Routes to School

Information on upcoming events for SRTS is provided in the agenda packets.

E. Requests for Future Agenda Topics

Marshall Touchton suggested a presentation on the Advantage Pinellas Housing Compact, after seeing a presentation at the recent PAC meeting.

Councilmember Kathleen Beckman inquired about an update on the Drew Street projects.

F. Comments

No suggestions were made at this time.

6. ADJOURNMENT

The Committee adjourned at 10:17 am.

SUMMARY

The Pinellas County Planning Department has been working on updates to their Comprehensive Plan, the document that sets the policy direction for how the County operates. The work will include updates to the Goals, Objectives, Policies and Strategies related to the Transportation Element that confirm and strengthen their commitment to safety and focus on access to educational opportunities for all. In addition, highlights of the proposed Lifetime Learning Element, which incorporates the current Public Schools Element, will also be presented. Staff from the Pinellas County Planning Department will provide an overview of the proposed changes and discuss how those changes will impact planning for public school facilities and students.

ATTACHMENT(S): None

ACTION: None Required, Informational Item Only

SUMMARY

Student travel to and from school was discussed at the September 15, 2021 STEPS Committee meeting. Typically, the first two weeks of a new school year bring an increase in students traveling via personal vehicles which slowly tapers off when more students begin walking, riding a bus or car sharing. However, this year, the long car lines are not tapering off and it is believed to be a consequence of the COVID-19 pandemic, with fewer parents opting to send their children to school with others. This is occurring statewide and not just in Pinellas County. These longer car lines are backing up into the streets. Tempers are rising for those in the line and for those trying to go around the lines. Alternate drop off areas are being created by parents in local neighborhoods where driveways are blocked, no parking signs are ignored, and dangerous vehicle movements are made with students walking in roadways. Local law enforcement is aware and are doing what they can to handle the increase personal vehicles in school areas.

Members of the STEPS Committee will be at the STSC meeting to discuss this issue and answer questions from committee members.

ATTACHMENT(S): None

ACTION: None Required, Informational Item Only

SUMMARY

Joseph Camera, CSA with the Pinellas County Schools Transportation Department will be discussing the overall challenges of navigating children to and from school, during the pandemic.

ATTACHMENT(S): None

ACTION: None Required, Informational Item Only

School Transportation Safety Committee – October 6, 2021

6. A- E. Other Business

A. Crash Data Analysis

The canned crash report selections identify possible crashes that have happened during the times school age children would have been on the roadways (5:00 am – 5:00 pm).

ATTACHMENT(S): Canned Crash Report

B. Hazardous Walking Conditions Update

Hazardous Walking Routes Assessment has been completed and is attached.

ATTACHMENT(S): Hazardous Walking Routes Assessment

C. Pinellas SPOTlight Emphasis Areas Update

Forward Pinellas staff will provide a brief update on the status of activities related to the three SPOTlight emphasis areas.

D. STEPS Program – Minutes

The School Transportation and Enhanced Pedestrian Safety (STEPS) Committee is facilitated by the Pinellas County School Board and was created as a forum to discuss and address traffic safety issues around Pinellas County Schools. The STEPS committee consists of technical planning/engineering staff from the local governments and agencies throughout the County. Attached are meeting summaries and agendas from their meetings since the last STSC.

ATTACHMENT(S):

- STEPS June 2021 Minutes
- STEPS July 2021 Minutes
- STEPS August 2021 Minutes
- STEPS September 2021 Minutes

E. Safe Routes to School

Florida's Safe Routes to School (SRTS) Program works to improve the safety of children walking or bicycling to and from school through infrastructure improvements, enforcement activity, and safety education. The below links are to recent information regarding SRTS initiatives and activities and infrastructure legislation.

Link to Safe Routes to School:

<https://mailchi.mp/saferoutespartnership/september-eneews-2021?e=fd3b009d21>

Link to Safe Routes Partners:

<https://mailchi.mp/saferoutespartnership/safe-routes-federal-policy-update-aug-2021?e=fd3b009d21>

F. Request for Future Agenda Topics

The STSC members may discuss any suggestions for future agenda topics.

Report Memo:

age under 15 and 15-19
and times between 5am and 5pm
monday thur friday



Selections used to generate this report:

Years: 2021,2020,2019

Days: Monday,Tuesday,Wednesday,Thursday,Friday

Hours: 05,06,07,08,09,10,11,12,13,14,15,16,17

PersonAge-PersonType: DRIVER,NONDRIVER,NONMOTORIST

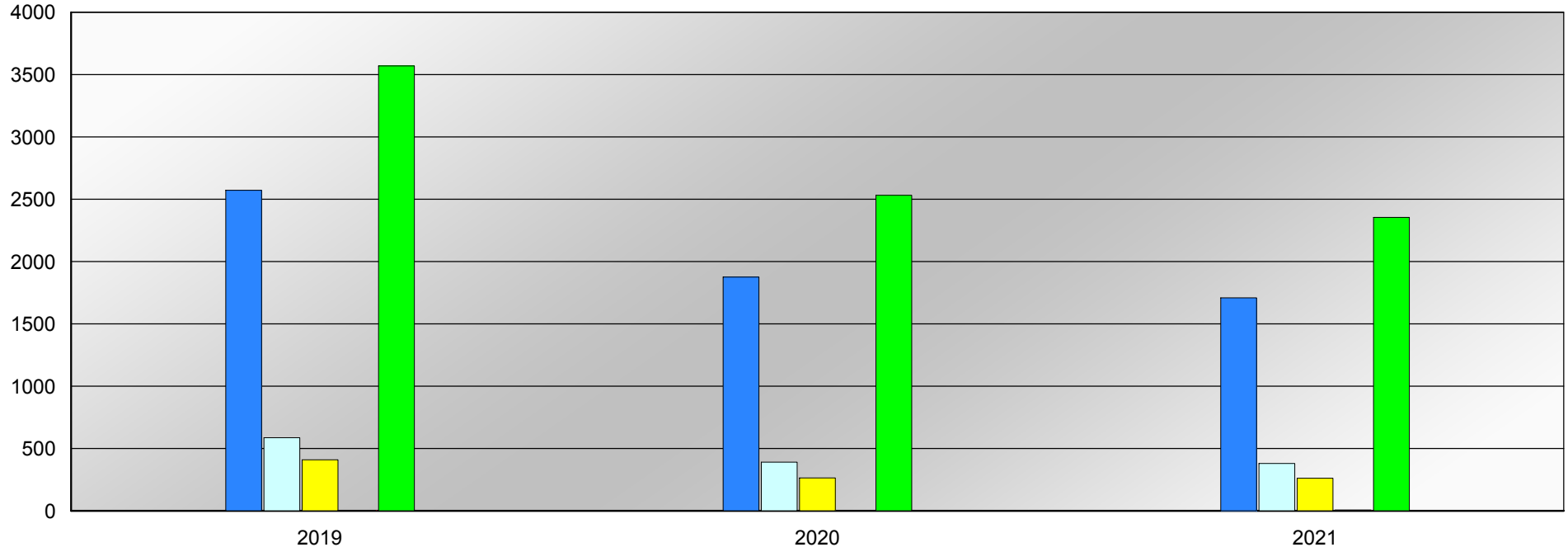
PersonAge-Age: 1 and 14,15 and 19

Records Date Range:	Crashes	Fatalities	Injuries	Peds	Bike	Motorcycle	Angles	Head On	Intoxication	Speeding	Run Control	Vul. Users	Agr. Driving	Lane Depart	At Int.
01/01/2019 to 09/17/2021	8,455	10	1,440	164	217	53	1,736	100	98	20	423	395	2,584	1,539	2,039

Intersection Summary Top 40 Report Click for Drill Down	Total Crashes	Total Fatalities	Total Injuries	Injury Severity				Ped and Bike		Crash Type				Strategic Highway Safety Plan										
				Fatal Crashes	Incap	Non Incap	Possible Injury	Ped	Bike	Angle	Left Turn	Right Turn	Head On	Comm. Veh	Work Zone	No Restraint	Speed Agr. Driving	Lane Depart	At Int.	Distract Driving	Teen Driver 15-19	Aging Driver 65+	Impaired	Motor Cycle
				I 275 @ 38TH AVE N	53	0	2	0	0	2	11	0	0	4	2	0	1	3	0	1	13	9	5	16
US 19 @ TAMPA RD	49	0	11	0	4	4	10	0	0	2	2	0	1	5	0	1	13	4	4	6	23	8	0	1
I 275 INTERCHANGE @ GANDY BLVD INTERCHAN	46	0	7	0	1	5	5	0	0	2	0	0	0	4	1	1	8	10	3	8	21	7	1	0
US 19 @ GULF TO BAY BLVD	40	0	1	0	1	0	1	0	1	1	1	0	0	4	0	0	4	7	2	4	17	5	0	0
US 19 @ CURLEW RD	35	0	0	0	0	0	9	0	0	4	0	1	0	3	1	0	8	4	4	4	13	11	0	1
US 19 @ E TARPON AVE	34	0	3	0	0	2	11	0	0	8	2	0	0	0	0	0	10	0	11	4	17	6	3	0
I 275 INTERCHANGE @ 54TH AVE N INTERCHAN	33	0	5	0	2	0	4	0	0	3	0	0	0	4	1	1	10	8	3	10	13	3	0	0
I 275 @ 22ND AVE N	32	0	3	0	0	3	3	0	0	1	0	0	0	0	0	0	3	5	1	5	14	6	0	0
USA 19 @ ULMERTON RD	29	0	1	0	0	1	5	0	0	1	0	1	3	4	0	0	6	7	11	10	18	6	0	0
SR 60 @ S BELCHER RD	29	0	5	0	1	3	1	0	1	3	1	0	0	1	0	0	11	6	2	2	13	6	1	0
66TH ST N @ PARK BLVD N	28	0	9	0	0	3	4	0	1	4	1	0	0	3	0	0	4	7	5	1	12	5	0	0
US 19 @ EAST BAY DR	28	0	8	0	2	0	3	1	1	1	0	0	0	1	0	1	7	11	7	10	11	2	0	1
US 19 @ DREW ST	28	0	4	0	0	3	3	0	0	3	1	1	0	1	0	0	7	7	3	1	17	7	0	0
CAUSEWAY BLVD @ MANDALAY AVE	28	0	0	0	0	0	0	0	0	6	0	0	0	3	0	0	10	21	5	0	9	5	0	0
US 19 @ COUNTRYSIDE BLVD	28	0	2	0	0	2	2	0	0	4	0	1	1	2	0	2	8	8	2	1	11	2	0	0
SR 688 @ STARKEY RD	27	0	0	0	0	0	4	0	0	2	0	0	0	1	0	0	8	8	7	7	9	5	0	1
49TH ST N @ PARK BLVD N	26	0	4	0	1	2	4	3	0	3	0	2	0	0	0	0	2	6	5	4	7	9	0	0
US 19 @ RANCHETTE LN	26	0	17	0	7	0	6	0	0	1	18	1	0	0	0	1	14	3	12	3	12	10	0	1
I 275 INTERCHANGE @ ROOSEVELT BLVD INTER	25	0	3	0	0	3	2	0	0	2	0	0	0	3	6	0	7	7	0	4	12	5	0	0
I 275 @ 5TH AVE N	25	0	5	0	1	3	5	0	0	3	1	0	0	2	0	0	7	8	5	4	10	7	0	0
US 19 @ SUNSET POINT RD	23	0	5	0	0	4	1	0	0	1	1	1	0	2	0	0	7	5	2	1	10	3	0	0
US 19 @ 22ND AVE N	23	0	4	0	0	2	3	0	0	0	0	1	1	1	0	0	9	7	3	3	7	4	0	0
US 19 @ NEBRASKA AVE	22	0	3	0	1	2	2	0	1	1	0	0	0	1	0	0	5	5	3	5	8	5	0	0
CR 611 @ 38TH AVE N	22	0	5	0	1	3	3	0	0	5	6	0	0	0	0	0	8	1	8	0	9	2	0	0
US 19 @ GANDY BLVD	21	0	2	0	1	1	4	1	0	0	0	0	0	1	0	1	0	6	0	2	6	5	0	1
SR 688 @ S BELCHER RD	21	0	1	0	0	1	3	0	0	1	0	0	0	0	0	0	3	1	7	12	9	2	0	0
GULF TO BAY BLVD @ S KEENE RD	21	0	1	0	0	1	1	0	0	1	0	0	0	0	0	0	4	5	0	2	12	8	0	0
MISSOURI AVE @ COURT ST	21	0	3	0	0	2	0	0	0	0	8	0	0	1	0	1	11	3	9	4	9	9	0	0
EAST LAKE RD @ KEYSTONE RD	21	0	0	0	0	0	3	0	0	0	1	0	1	0	0	0	1	1	3	4	17	1	0	0
66TH ST N (SR 693) @ 38TH AVE N	21	1	0	1	0	0	4	1	0	4	0	0	0	1	0	0	5	3	4	0	4	7	1	0
SR 686 @ 34TH ST N	20	0	1	0	0	1	2	0	0	2	0	0	0	3	0	1	7	7	4	0	6	4	0	0
SR 60 @ S HERCULES AVE	20	0	4	0	0	2	4	1	1	1	6	0	0	0	0	0	5	7	6	0	6	4	0	0
US 19 @ HAMMOCK PINE BLVD	20	0	1	0	1	0	3	0	0	0	0	0	1	1	0	1	6	5	0	6	10	4	0	0
54TH AVE S @ 31ST ST S	20	0	1	0	0	1	4	0	0	5	3	0	0	2	0	0	9	3	3	2	7	3	0	0
US 19 @ NE COACHMAN RD	19	0	2	0	0	2	2	1	3	1	0	0	0	2	0	1	3	3	0	1	8	1	0	0
US 19 @ BECKETT WAY S	19	0	5	0	1	0	5	0	0	1	0	0	0	4	0	1	3	1	2	1	8	6	0	1
5TH AVE N @ I 275 NB ON RAMP	19	0	1	0	0	1	6	0	0	2	1	0	0	0	0	0	7	2	3	4	10	5	0	0
US 19 @ 38TH AVE N	19	0	1	0	0	1	0	0	0	3	1	0	1	0	0	0	5	2	4	1	4	2	0	0
US 19 @ 78TH AVE N	18	0	1	0	1	0	2	0	0	2	3	1	0	1	0	0	1	3	6	5	8	5	0	0
N MISSOURI AVE @ EAST BAY DR	18	0	0	0	0	0	5	0	0	2	0	0	0	0	0	0	3	0	2	6	10	3	0	0

Records Date Range:	Crashes	Fatalities	Injuries	Peds	Bike	Motorcycle	Angles	Head On	Intoxication	Speeding	Run Control	Vul. Users	Agr. Driving	Lane Depart	At Int.
01/01/2019 to 09/17/2021	8,455	10	1,440	164	217	53	1,736	100	98	20	423	395	2,584	1,539	2,039

Number of Crashes By Year

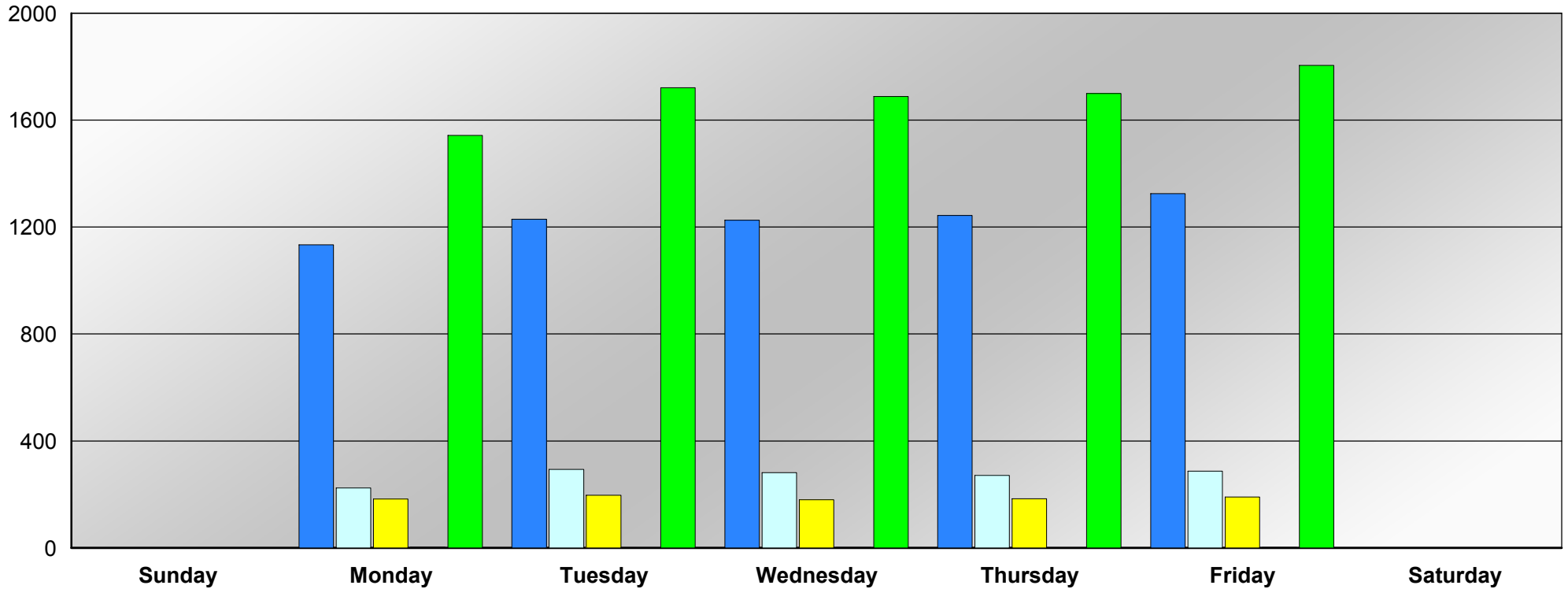


Breakdown of Crashes by Year

	2019	2020	2021
PDO	2,572	1,875	1,708
Possible Injury	587	391	379
Injury Crashes	409	264	261
Fatal Crashes	2	1	6
Total Crashes	3,570	2,531	2,354

Records Date Range:	Crashes	Fatalities	Injuries	Peds	Bike	Motorcycle	Angles	Head On	Intoxication	Speeding	Run Control	Vul. Users	Agr. Driving	Lane Depart	At Int.
01/01/2019 to 09/17/2021	8,455	10	1,440	164	217	53	1,736	100	98	20	423	395	2,584	1,539	2,039

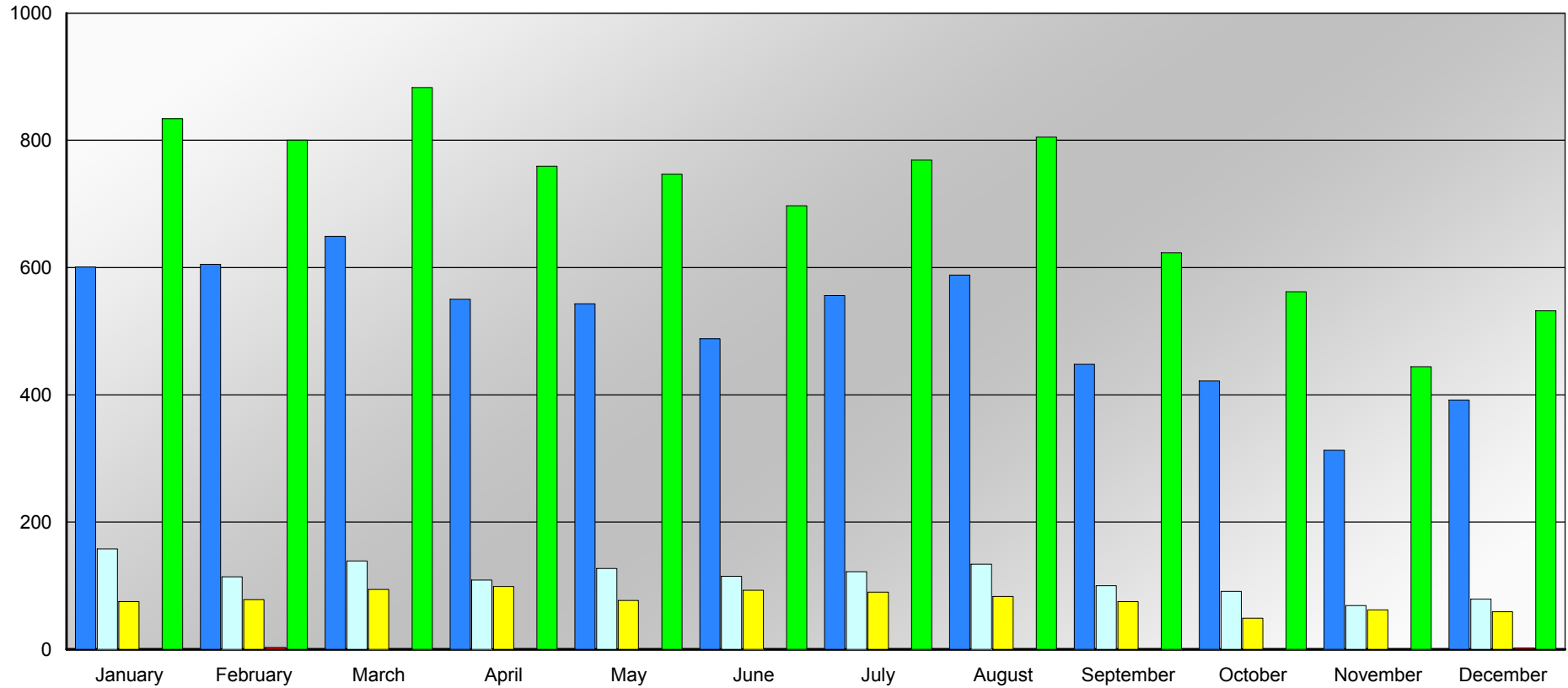
Number of Crashes by Day of Week



	Sunday	Monday	Tuesday	Wednesday	Thursday	Friday	Saturday	Total
PDO	0	1,133	1,229	1,225	1,243	1,325	0	6,155
Possible Injury	0	224	294	281	271	287	0	1,357
Injury Crashes	0	183	197	180	184	190	0	934
Fatal Crashes	0	3	1	2	1	2	0	9
Others	0	0	0	0	0	0	0	0
Total Crashes	0	1,543	1,721	1,688	1,699	1,804	0	8,455

Records Date Range:	Crashes	Fatalities	Injuries	Peds	Bike	Motorcycle	Angles	Head On	Intoxication	Speeding	Run Control	Vul. Users	Agr. Driving	Lane Depart	At Int.
01/01/2019 to 09/17/2021	8,455	10	1,440	164	217	53	1,736	100	98	20	423	395	2,584	1,539	2,039

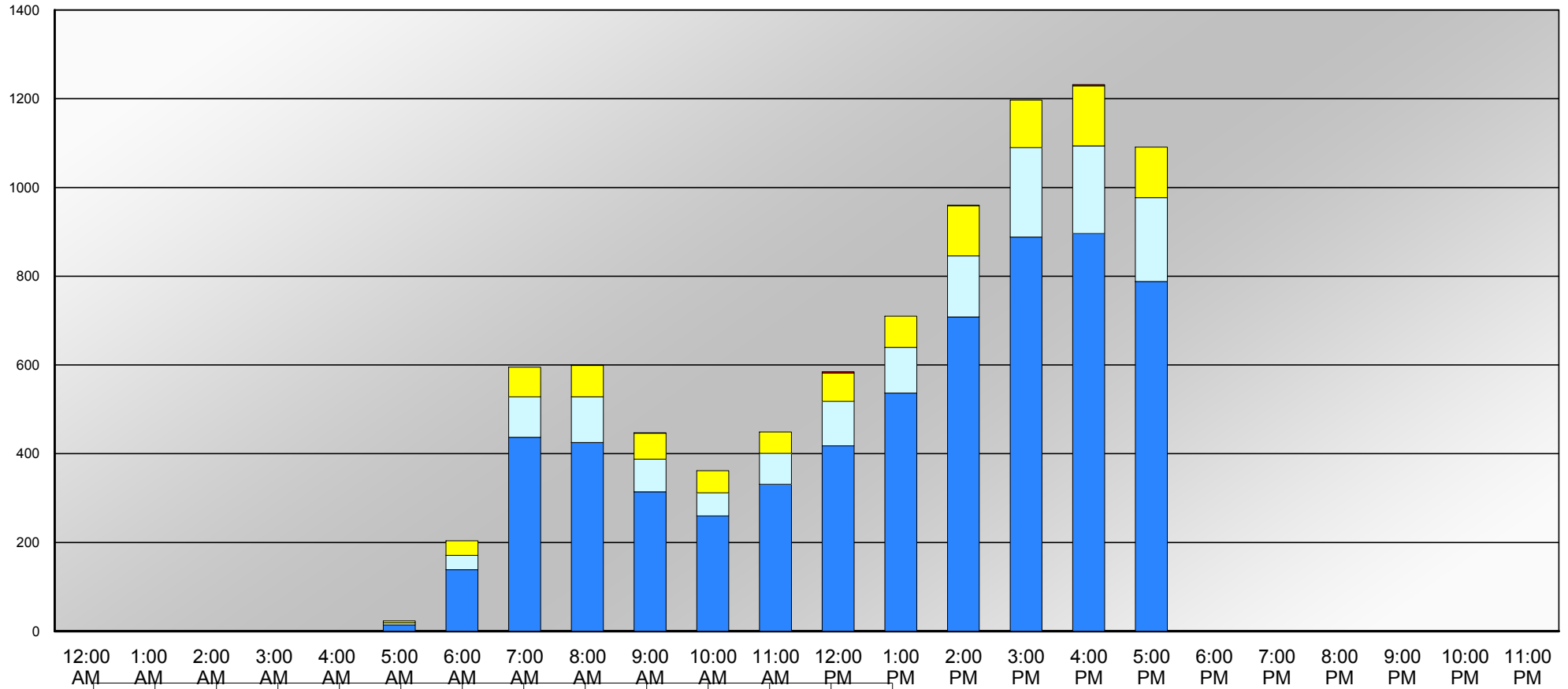
Number of Crashes by Month



	January	February	March	April	May	June	July	August	September	October	November	December	Total
PDO	601	605	649	550	543	488	556	588	448	422	313	392	6,155
Possible Injury	158	114	139	109	127	115	122	134	100	91	69	79	1,357
Injury Crashes	75	78	94	99	77	93	90	83	75	49	62	59	934
Fatal Crashes	0	3	1	1	0	1	1	0	0	0	0	2	9
Total Crashes	834	800	883	759	747	697	769	805	623	562	444	532	8,455

Records Date Range:	Crashes	Fatalities	Injuries	Peds	Bike	Motorcycle	Angles	Head On	Intoxication	Speeding	Run Control	Vul. Users	Agr. Driving	Lane Depart	At Int.
01/01/2019 to 09/17/2021	8,455	10	1,440	164	217	53	1,736	100	98	20	423	395	2,584	1,539	2,039

Crashes by Time of Day



	5:00 AM	6:00 AM	7:00 AM	8:00 AM	9:00 AM	10:00 AM	11:00 AM	12:00 PM	1:00 PM	2:00 PM	3:00 PM	4:00 PM	5:00 PM
PDO	14	139	437	425	314	260	331	418	537	708	888	896	788
Possible Injury	5	32	91	103	74	52	70	100	103	138	202	198	189
Injury Crashes	4	33	67	71	58	50	48	64	70	113	107	135	114
Fatal Crashes	0	0	0	1	1	0	0	3	0	1	0	3	0
Total	23	204	595	600	447	362	449	585	710	960	1,197	1,232	1,091

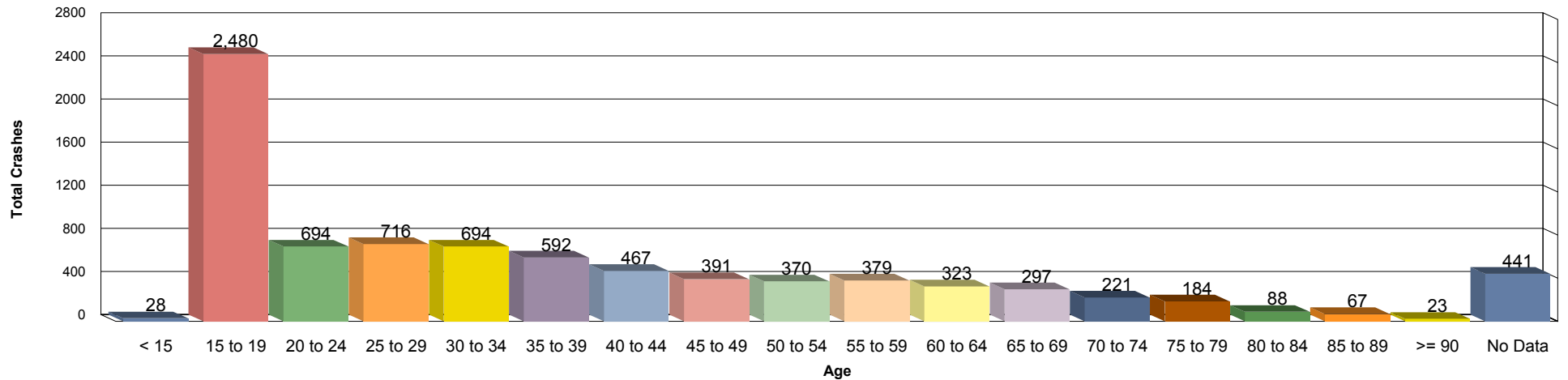
Records Date Range:	Crashes	Fatalities	Injuries	Peds	Bike	Motorcycle	Angles	Head On	Intoxication	Speeding	Run Control	Vul. Users	Agr. Driving	Lane Depart	At Int.
01/01/2019 to 09/17/2021	8,455	10	1,440	164	217	53	1,736	100	98	20	423	395	2,584	1,539	2,039

Driver Age Summary (Vehicle 1, Driver 1)

Driver Actions

Drill Down Rpt.	Crashes	Fatalities	Injuries	Peds	Bike	Motorcycle	Intoxication	Speeding	Run Control	Run Off-Road	Distraction	Agr. Driving
Age < 15	28	0	3	3	1	1	0	0	0	6	1	5
Age 15 to 19	2480	2	340	25	31	13	17	10	123	128	357	739
Age 20 to 24	694	4	141	10	4	4	12	2	38	19	84	216
Age 25 to 29	716	1	116	12	17	1	5	1	36	15	88	214
Age 30 to 34	694	1	118	24	14	6	9	2	33	9	100	201
Age 35 to 39	592	0	82	6	20	4	10	0	28	16	86	188
Age 40 to 44	467	0	131	8	11	3	9	2	24	5	66	159
Age 45 to 49	391	0	71	10	9	3	5	0	16	7	47	121
Age 50 to 54	370	0	69	10	11	2	9	0	23	3	46	108
Age 55 to 59	379	0	70	10	19	5	8	0	14	6	39	118
Age 60 to 64	323	0	64	2	7	3	3	0	16	4	33	100
Age 65 to 69	297	0	59	11	12	3	4	1	23	4	27	110
Age 70 to 74	221	0	37	2	8	0	2	0	10	4	18	85
Age 75 to 79	184	0	41	2	7	0	2	0	19	0	15	82
Age 80 to 84	88	1	12	2	2	1	0	1	4	1	9	33
Age 85 to 89	67	1	16	1	0	0	0	0	6	2	10	27
Age >= 90	23	0	3	2	2	0	0	0	3	0	0	12
Age No Data	441	0	67	24	42	4	3	1	7	4	16	66

Driver Age



Records Date Range:	Crashes	Fatalities	Injuries	Peds	Bike	Motorcycle	Angles	Head On	Intoxication	Speeding	Run Control	Vul. Users	Agr. Driving	Lane Depart	At Int.
01/01/2019 to 09/17/2021	8,455	10	1,440	164	217	53	1,736	100	98	20	423	395	2,584	1,539	2,039

Crash Type Summary

Impact Type

Strategic Highway Safety Plan (SHSP)

Click for Drill Down

	Crashes	Fatalities	Injuries	Peds	Bike	Motorcycle	Vulnerable Users	Aggressive Driving	Lane Departure	At Intersection
Angle	2,410	7	644	7	39	18	64	1329	11	1323
Front to Front	181	1	44	0	2	0	2	80	178	84
Front to Rear	3,650	0	418	2	7	16	25	582	11	384
Rear to Side	91	0	9	0	1	0	1	6	0	4
Sideswipe, same direction	1,072	1	58	3	0	8	11	394	1066	98
Unknown	1,051	1	267	152	168	11	292	193	273	146

Relation to Intersection

Strategic Highway Safety Plan (SHSP)

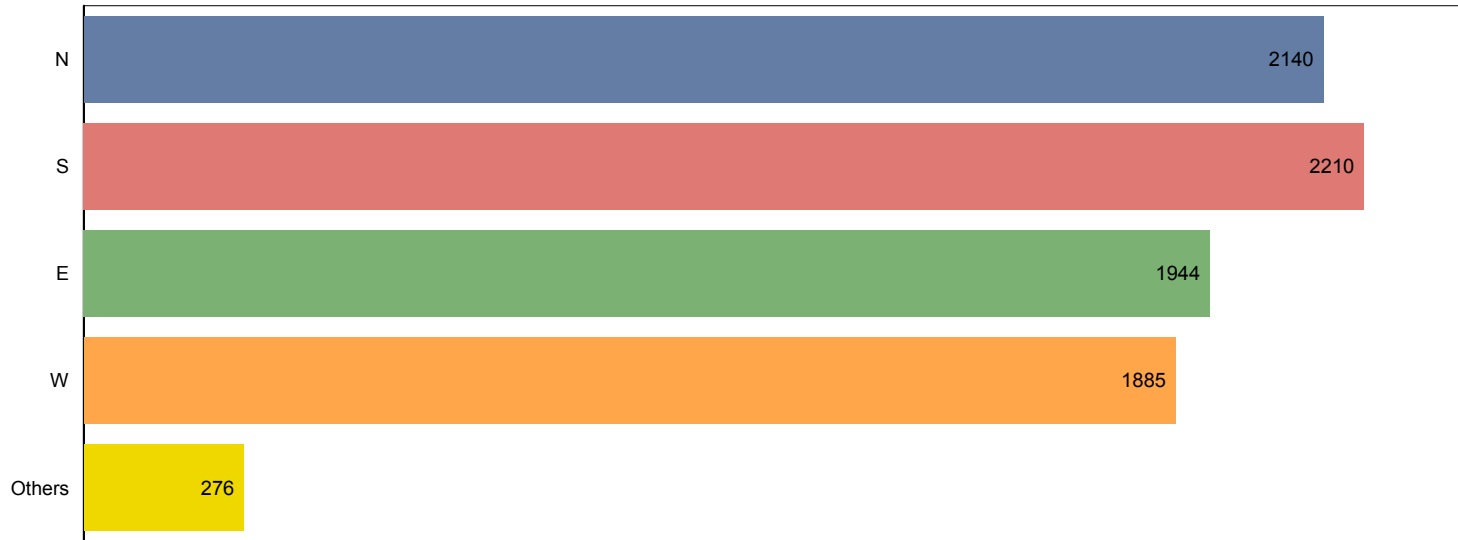
Click for Drill Down

	Crashes	Fatalities	Injuries	Peds	Bike	Motorcycle	Vulnerable Users	Aggressive Driving	Lane Departure	At Intersection
Intersection	1,990	4	572	26	61	21	102	1116	211	1990
Intersection-Related	1,270	0	183	24	41	7	64	326	182	48
Non-Junction	4,523	6	589	91	74	20	167	915	1007	0
Driveway/Ally Access Related	271	0	51	7	28	0	31	110	21	0
Entrance/Exit Ramp	77	0	8	0	1	0	1	13	26	0
Railway Grade Crossing	2	0	0	0	0	0	0	0	0	1
Other, Explain in Narrative	133	0	7	13	3	0	14	40	36	0
Unknown	189	0	30	3	9	5	16	64	56	0

Records Date Range:	Crashes	Fatalities	Injuries	Peds	Bike	Motorcycle	Angles	Head On	Intoxication	Speeding	Run Control	Vul. Users	Agr. Driving	Lane Depart	At Int.
01/01/2019 to 09/17/2021	8,455	10	1,440	164	217	53	1,736	100	98	20	423	395	2,584	1,539	2,039

Vehicle 1 Direction Summary

Total Crashes By Vehicle 1 Direction



Crash Type By Vehicle 1 Direction

	Angle	Front to Front	Front to Rear	No Data	Other, Explain in Narrative	Rear to Rear	Rear to Side	Sideswipe, Opposite direction	Sideswipe, same direction	Unknown
N	627	49	931	138	70	13	17	14	276	5
S	600	43	948	153	105	7	21	13	314	6
E	570	46	850	144	57	9	28	18	222	0
W	549	36	831	131	67	7	19	14	231	0
Others	64	7	90	60	14	4	6	1	29	1
Total	2,410	181	3,650	626	313	40	91	60	1,072	12

Records Date Range:	Crashes	Fatalities	Injuries	Peds	Bike	Motorcycle	Angles	Head On	Intoxication	Speeding	Run Control	Vul. Users	Agr. Driving	Lane Depart	At Int.
01/01/2019 to 09/17/2021	8,455	10	1,440	164	217	53	1,736	100	98	20	423	395	2,584	1,539	2,039

At Fault Vehicle Summary

Vehicle Type	Strategic Highway Safety Plan (SHSP)									
	Crashes	Fatalities	Injuries	Peds	Bike	Motorcycle	Vulnerable Users	Aggressive Driving	Lane Departure	At Intersection
Click for Drill Down										
All Terrain Vehicle (ATV)	1	0	0	0	0	0	0	1	1	0
Bus	84	0	21	4	1	0	4	13	27	16
Cargo Van (10,000lbs (4,536kg) or less)	89	0	9	4	2	0	5	27	13	16
Low Speed Vehicle	5	0	3	0	1	0	1	0	3	0
Medium/Heavy Trucks (more than 10,000lbs)	85	0	18	0	1	1	2	16	26	13
Moped	17	0	10	0	0	0	0	8	5	7
Motor Home	2	0	2	0	0	0	0	0	1	0
Motorcycle	25	1	13	0	0	25	25	10	4	6
Other Light Trucks (10,000lbs (4,536kg))	112	0	15	1	3	0	4	34	16	25
Other, Explain in Narrative	30	0	9	2	1	0	3	6	10	6
Passenger Car	4,701	4	778	90	115	17	197	1526	847	1172
Passenger Van	356	1	57	1	8	1	10	99	71	84
Pickup	809	1	125	17	16	2	32	230	138	158
Unknown	176	0	15	11	17	1	26	19	35	36
No Data	1,963	3	365	34	52	6	86	595	342	500

Records Date Range:	Crashes	Fatalities	Injuries	Peds	Bike	Motorcycle	Angles	Head On	Intoxication	Speeding	Run Control	Vul. Users	Agr. Driving	Lane Depart	At Int.
01/01/2019 to 09/17/2021	8,455	10	1,440	164	217	53	1,736	100	98	20	423	395	2,584	1,539	2,039

Vehicle Movement

Strategic Highway Safety Plan (SHSP)

Click for Drill Down	Crashes	Fatalities	Injuries	Peds	Bike	Motorcycle	Vulnerable Users	Aggressive Driving	Lane Departure	At Intersection
Straight Ahead	4,318	4	760	74	94	27	177	1041	397	930
Turning Left	1,258	4	375	27	17	8	49	686	198	740
Turning Right	561	0	70	20	66	2	78	214	110	138
Making U-Turn	106	0	11	0	0	1	1	40	19	32
Backing	394	0	17	12	2	0	13	11	13	12
Changing Lanes	695	2	65	0	0	6	6	294	473	35
Overtaking/Passing	86	0	14	4	3	2	8	37	47	12
Parked	10	0	0	1	0	0	1	0	3	1
Slowing	247	0	44	1	2	1	4	53	5	30
Other, Explain in Narrative	135	0	21	8	4	1	12	21	56	7
Unknown	645	0	63	17	29	5	46	187	218	102

Records Date Range:	Crashes	Fatalities	Injuries	Peds	Bike	Motorcycle	Angles	Head On	Intoxication	Speeding	Run Control	Vul. Users	Agr. Driving	Lane Depart	At Int.
01/01/2019 to 09/17/2021	8,455	10	1,440	164	217	53	1,736	100	98	20	423	395	2,584	1,539	2,039

Roadway Condition Summary

Roadway Location

Strategic Highway Safety Plan (SHSP)

Click for Drill Down	Crashes	Fatalities	Injuries	Peds	Bike	Motorcycle	Vulnerable Users	Aggressive Driving	Lane Departure	At Intersection
On Roadway	7,702	10	1344	118	174	53	320	2491	1326	2015
Median	17	0	6	0	0	0	0	2	10	2
Shoulder	41	0	4	1	2	0	2	5	29	5
Off Roadway	376	0	61	26	32	0	47	47	131	11
Unknown	319	0	25	19	9	0	26	39	43	6

Road Condition

Strategic Highway Safety Plan (SHSP)

Click for Drill Down	Crashes	Fatalities	Injuries	Peds	Bike	Motorcycle	Vulnerable Users	Aggressive Driving	Lane Departure	At Intersection
Wet	799	0	128	9	7	3	16	203	136	180
Dry	7,650	10	1310	153	210	50	377	2380	1402	1857
Other, Explain in Narrative	2	0	1	2	0	0	2	0	1	0
Unknown	4	0	1	0	0	0	0	1	0	2

Records Date Range:	Crashes	Fatalities	Injuries	Peds	Bike	Motorcycle	Angles	Head On	Intoxication	Speeding	Run Control	Vul. Users	Agr. Driving	Lane Depart	At Int.
01/01/2019 to 09/17/2021	8,455	10	1,440	164	217	53	1,736	100	98	20	423	395	2,584	1,539	2,039

Road Contributing Cause Summary

Strategic Highway Safety Plan (SHSP)

Click for Drill Down	Crashes	Fatalities	Injuries	Peds	Bike	Motorcycle	Vulnerable Users	Aggressive Driving	Lane Departure	At Intersection
None	8,143	10	1393	160	214	51	388	2505	1477	1984
Debris	5	0	2	0	0	0	0	0	2	0
Obstruction in Roadway	14	0	2	0	0	0	0	2	4	2
Worn, Travel-Polished Surface	2	0	0	0	0	0	0	0	0	0
Shoulders	3	0	0	1	1	0	1	1	1	1
Work Zone	23	0	3	0	0	0	0	10	7	3
Other, Explain in Narrative	37	0	3	1	1	2	4	9	11	7
Unknown	228	0	37	2	1	0	2	57	37	42

Records Date Range:	Crashes	Fatalities	Injuries	Peds	Bike	Motorcycle	Angles	Head On	Intoxication	Speeding	Run Control	Vul. Users	Agr. Driving	Lane Depart	At Int.
01/01/2019 to 09/17/2021	8,455	10	1,440	164	217	53	1,736	100	98	20	423	395	2,584	1,539	2,039

Traffic Control

Strategic Highway Safety Plan (SHSP)

Click for Drill Down	Crashes	Fatalities	Injuries	Peds	Bike	Motorcycle	Vulnerable Users	Aggressive Driving	Lane Departure	At Intersection
Traffic Control Signal	2,026	4	456	40	59	13	100	730	277	861
Stop Sign	965	1	210	16	58	11	74	591	80	573
Flashing Signal	27	0	6	3	2	0	3	12	2	10
Yield Sign	121	0	11	2	1	0	3	47	22	19
School Zone Sign/Device	19	0	5	2	0	0	2	8	1	2
No Controls	5,098	5	717	96	89	29	201	1147	1125	529
Railway Crossing Device	4	0	0	0	0	0	0	0	0	1
Person	6	0	1	1	0	0	1	2	0	2
Other, Explain in Narrative	99	0	17	1	4	0	4	27	16	16
Unknown	3	0	0	0	0	0	0	0	1	1
Unknown	87	0	17	3	4	0	7	20	15	25

Road Alignment

Strategic Highway Safety Plan (SHSP)

Click for Drill Down	Crashes	Fatalities	Injuries	Peds	Bike	Motorcycle	Vulnerable Users	Aggressive Driving	Lane Departure	At Intersection
Straight	8,103	10	1397	153	208	52	378	2497	1429	1983
Curve Left	154	0	22	3	2	1	5	42	62	21
Curve Right	157	0	18	5	6	0	8	43	42	25
Unknown	41	0	3	3	1	0	4	2	6	10

Records Date Range:	Crashes	Fatalities	Injuries	Peds	Bike	Motorcycle	Angles	Head On	Intoxication	Speeding	Run Control	Vul. Users	Agr. Driving	Lane Depart	At Int.
01/01/2019 to 09/17/2021	8,455	10	1,440	164	217	53	1,736	100	98	20	423	395	2,584	1,539	2,039

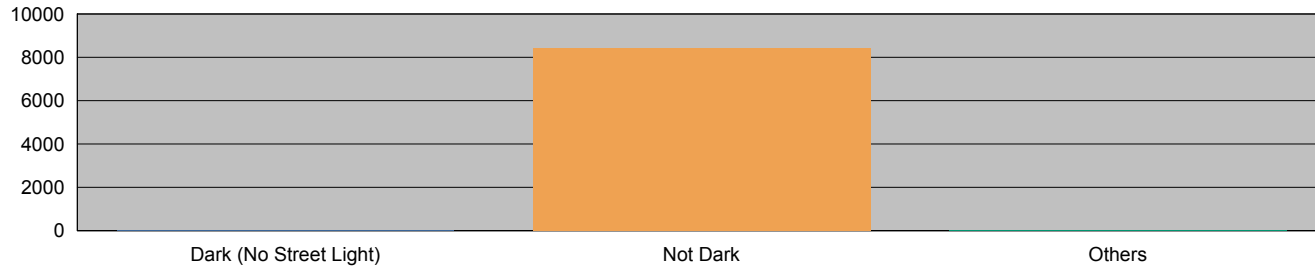
Environment Summary Report

Lighting

Strategic Highway Safety Plan (SHSP)

Click for Drill Down

	Crashes	Fatalities	Injuries	Peds	Bike	Motorcycle	Vulnerable Users	Aggressive Driving	Lane Departure	At Intersection
Daylight	8,058	10	1354	145	207	49	366	2479	1463	1937
Dark-Lighted	133	0	29	8	3	3	12	38	30	36
Dusk	96	0	19	2	4	0	5	19	19	21
Dawn	141	0	33	5	3	1	8	44	22	39
Dark-Not Lighted	19	0	1	3	0	0	3	4	4	6
Unknown	8	0	4	1	0	0	1	0	1	0

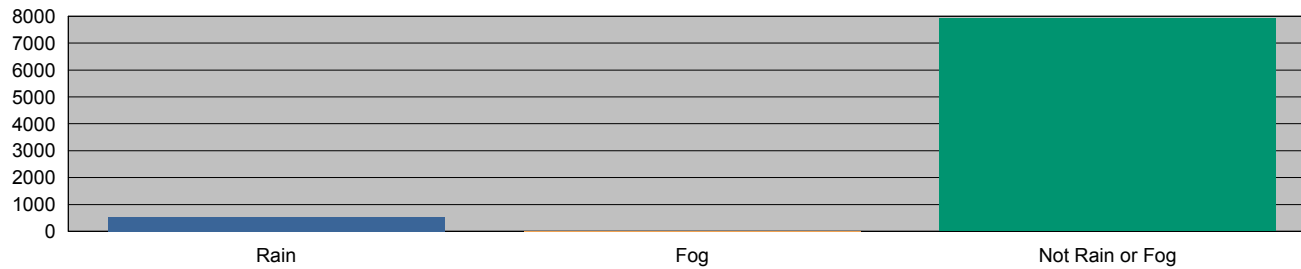


Weather

Strategic Highway Safety Plan (SHSP)

Click for Drill Down

	Crashes	Fatalities	Injuries	Peds	Bike	Motorcycle	Vulnerable Users	Aggressive Driving	Lane Departure	At Intersection
Clear	6,937	9	1172	148	194	47	356	2158	1257	1652
Cloudy	980	1	180	10	17	5	28	291	185	261
Fog, Smog, Smoke	10	0	2	0	0	0	0	3	2	4
Rain	527	0	86	5	6	1	10	132	94	122
Other, Explain in Narrative	1	0	0	1	0	0	1	0	1	0



Records Date Range:	Crashes	Fatalities	Injuries	Peds	Bike	Motorcycle	Angles	Head On	Intoxication	Speeding	Run Control	Vul. Users	Agr. Driving	Lane Depart	At Int.
01/01/2019 to 09/17/2021	8,455	10	1,440	164	217	53	1,736	100	98	20	423	395	2,584	1,539	2,039

Located Crashes

Area	Crashes	Fatalities	Injuries
BELLEAIR	5	0	0
BELLEAIR BEACH	2	0	1
BELLEAIR BLUFFS	7	0	0
CLEARWATER	1285	1	187
DUNEDIN	134	0	43
GULFPORT	17	0	20
INDIAN ROCKS BEACH	13	0	2
INDIAN SHORES	3	0	1
KENNETH CITY	30	0	1
LARGO	519	0	72
MADEIRA BEACH	34	0	4
MADERIA BEACH	2	0	0
N REDINGTON BEACH	1	0	0
N. REDINGTON BEACH	2	0	0
OLDSMAR	63	0	11
PALM HARBOR	1	0	0
PINELLAS PARK	692	0	164
REDINGTON SHORES	3	0	0
SAFETY HARBOR	41	0	7
SAINT PETERSBURG	1	0	0
SEMINOLE	179	0	34
SEMINOLE PARK	1	0	0
SOUTH PASADENA	8	0	4
ST PETE BEACH	23	0	2
ST PETERSBURG	2335	8	389
ST. PETE BEACH	13	0	1
TARPON SPRINGS	243	0	29
TREASURE ISLAND	18	0	2
UNINCORPORATED	1439	1	277
Totals:	7114	10	1251

Private Property, Parking Lot, and Unlocated Crashes

Area	Crashes	Fatalities	Injuries
BELLEAIR BLUFFS	3	0	1
CLEARWATER	146	0	40
DUNEDIN	18	0	2
GULFPORT	4	0	2
INDIAN ROCKS BEACH	5	0	1
INDIAN SHORES	2	0	0
KENNETH CITY	1	0	0
LARGO	210	0	11
MADEIRA BEACH	4	0	1
N REDINGTON BEACH	1	0	0
OLDSMAR	17	0	3
PALM HARBOR	1	0	0
PINELLAS PARK	97	0	9
REDINGTON BEACH	1	0	0
REDINGTON SHORES	3	0	0
SAFETY HARBOR	7	0	1
SEMINOLE	45	0	6
SOUTH PASADENA	3	0	3
ST PETE BEACH	1	0	1
ST PETERSBURG	358	0	34
ST. PETE BEACH	2	0	1
TARPON SPRINGS	31	0	5
TREASURE ISLAND	5	0	1
UNINCORPORATED	376	0	67
Totals:	1341	0	189

Sch #	School Name	Haz Type	Comm	Hazard Street	Hazard From	Hazard To	Traffic Count (Per/Hr)	FDOT Station	Edulog Boundary ID	Hazard Code #	State Record ID	Gov. Entity	# bus	Student Count	<2 miles	Unfunded	funded	Comments	
SOUTH COUNTY																			
11	Azalea ES	Unfunded		66th St N	Tyrone Blvd N	5th Ave N	1807	15 5114 2019		1783			5	412	238	40	0	east side of 66th St - unfunded	
11	Azalea ES	Unfunded		Treasure Island Cswy	Paradise Ln	Sunset Dr	AADT 20500	15 9189 2018		147						1	0	no sidewalks, 35mph	
16	Bay Point ES	Unfunded		34th St S	38th Ave S	7rd Ave S	2970	15 5078 2019		1782			5	422	163	1	0		
23	Bay Vista Fund	NA											0	531	205	0	0		
27	Bear Creek ES	NA											2	260	186	0	0		
48	Campbell Park ES	NA											4	432	414	0	0		
182	Douglas Jamerson ES	Unfunded		34th St N	13th Ave N	39th Ave S	4426	15 5082 2019	51821	1726			8	477	145	28	0		
121	Fairmount Park ES	NA											3	451	426	0	0	ped bridge by Gibbs	
169	Gulfport ES	Unfunded		34th St S	13th Ave S	30th Ave S	2970	15 5078 2019		144			4	456	278	2	0		
202	Lakewood ES	NA											2	299	263	0	0		
142	Lynch ES	Prep.		34th St N	67th Ave N	58th Ave N	5322	15 5144 2/21/2019		173	173		3	449	416	0	0	Haines Rd construction increase - Detour	
228	Maximo ES	Unfunded		34th St S	22nd Ave S	Paradise Pointe Cir S	2970	15 5078 2019		0			2	346	281	3	0		
237	Melrose ES	Unfunded		34th St S	4th Ave S	24th Ave S	2970	15 5078 02/21/2018		1751			2	367	362	0	0		
238	Midtown Academy	NA											5	261	71	0	0		
253	Mount Vernon ES	Unfunded		34th St N	30th Ave N	1st Ave N	4650	15 5085 03/21/2018		1599			3	294	248	47	0		
459	New Heights ES	Prep.		34th St N	68th Ave N	11th Ave N	5322	15 5144 2/21/2018		230	HZ114		5	553	488	0	266	car counts increased	
269	North Shore ES	NA											5	371	173	0	0		
15	Bauder ES	NA					29700	15 5078 2019					2	650	494	0	0		
39	Blanton ES	NA											5	460	406	0	0		
631	Gulf Beaches	NA											2	274	27	0	0		
214	Lealman ES	Prep.		US Hwy 19 N	80th Ave N	32nd Ave N	5322	15 5144 2/21/2018		1641	1641		3	408	372	189	0	62nd Ave N is north attend boundary - meets car counts for funding	

Sch #	School Name	Haz Type	Comm	Hazard Street	Hazard From	Hazard To	Traffic Count (Per/Hr)	FDOT Station	Edulog Boundary ID	Hazard Code #	State Record ID	Gov. Entity	# bus	Student Count	<2 miles	Unfunded	funded	Comments	
279	Northwest ES	NA											5	446	376	0	0		
302	Orange Grove ES	NA											1	328	287	0	0		
147	Perkins ES	Unfunded		34th St N	Central Ave	30th Ave S	2970	155078 2/21/18		1626	51471		10	449	129	19	0		
376	Sanderlin ES	Unfunded		34th St S	5th Ave S	42nd Ave S	2970	155078 2019		1848			10	664	94	9	0		
375	Sawgrass ES	NA											6	534	156	0	0		
391	Seminole ES	NA											3	411	371	0	0		
396	Seventy-Fourth St ES	NA											5	434	396	0	0		
126	Sexton ES	Prep.		34th St N	72nd Ave N	40th Ave N	5322	15 5144 2019		175			4	392	368	0	2	Now meets car counts for funded	
402	Shore Acres ES	NA											5	479	444	0	0		
477	Westgate ES	NA											1	444	421	0	0		
493	Woodlawn ES	Unfunded		34th St N	28th Ave N	7th Ave N	4650	15 5085 03/21/2018		172			4	232	161	0	0		
12	Azalea MS	NA											17	956	135	0	0		
17	Bay Point MS	Unfunded		34th St S	50th Ave S	Sunshine Skyway Lane	545	15 2703 9/27/16		343			13	823	316	1	0		
406	John Hopkins MS	Unfunded		34th St S	1st ave S	11th Ave S	4426	15 5082 2019		114			9	771	501	0	0		
215	Lealman Int	Unfunded		34th St N	26th Ave N	76th Ave N	5322	15 5144 2019		41			12	559	71	21	0		
232	Woodlawn	Unfunded		34 St N	Haines Rd N	53rd Ave N	5322	15 5144 2019		118			10	918	584	0	0		
393	Seminole MS	NA											11	976	346	0	0		
463	Thurgood Marsh MS	Unfunded		34th St S	1st Ave S	46th Ave S	2970	15 5078 02/21/2018		1784			14	962	161	51	0		
461	Tyrone MS	NA											12	967	276	0	0		
43	De Ciega HS	NA											19	1501	531	0	0		
153	Gibbs HS	NA											19	1191	492	0	0		
203	Wakewood HS	Unfunded		34th St S	46th Ave S	58th Ave S	2247	117 02/27/2018		52			13	1003	504	2	0		
264	Northeast HS	NA											15	1707	789	0	0		
392	Seminole HS	NA											19	1752	592	0	0		
378	St Petersburg HS	Unfunded		34th St N	28th Ave N	13th Ave S	4650	15 5085 03/21/2018		278			17	1766	450	113	0		
															cl				
							MID COUNTY												
														MID COUNTY					

Sch #	School Name	Haz Type	Comm	Hazard Street	Hazard From	Hazard To	Traffic Count (Per/Hr)	FDOT Station	Edulog Boundary ID	Hazard Code #	State Record ID	Gov. Entity	# bus	Student Count	<2 miles	Unfunded	funded	Comments	
5	Anona ES	Paral.		Indian Rocks RD	Wilcox Rd	Honeysuckle Rd	AADT 15000	15 9208 2018	70052	1786	3001	C	4	407	272	0	31	Deep Ditches - Impaired walkpath - 35mph	
5	Anona ES	Unfunded		Bridge	Indian Recks Cswy					247						38	0	R. McBride approved due to bridge	
13	Bardmoor ES	Paral.		Starkey Rd	Largo Lakes Blvd	94th Ave N	AADT 30000	15 9195 2016	110132	181	3647	C	4	408	253	0	1	Ditches - Impaired walkpath - 45mph	
32	Belcher ES	Unfunded		US Hwy 19 N	Cove Cay Dr	Nursery Rd			50321	294	2449	C	6	460	265	12	0		
32	Belcher ES	Perp.		SR686/East Bay Dr	US Hwy 19	Plumosa Dr	6163	15 5304 2019	110322	179	3648	A				2	0		
81	Cross Bayou ES	Unfunded		Bryan Dairy Rd	Belcher Rd	62nd St N				1465			6	344	250	39	0	fly over	
136	Fuguitt ES	Perp.		SR688/Ulmerton Rd	Railroad Ave	Lake Ave SE	6387	15 3032 5/22/2017	101362	1616	2472	C	6	444	205	0	2		
136	Fuguitt ES	Unfunded		119th St N	W of Pinellas Trl	S of Ulmerton										30	0	School Board, lack of crossing guards	
243	Mildred Helms ES	NA											6	536	403	0	0		
336	Pinellas Central ES	Unfunded		US Hwy 19 N	Gateway Blvd	Ulmerton Rd			53361	1630	2506	D	5	475	219	10	0	US 19 flyover @110th Ave N	
339	Pinellas Park ES	Perp.		US Hwy 19 N	66th Ave N	49th St N	7564	15 5029 03/20/2019	53391	1652	2509	D	4	441	318	0	25	Park Blvd flies over US19, ped crossing at US19 level	
346	Ponce De Leon ES												5	467	424	0	0		
435	Rawlings ES	NA											2	415	389	0	0		
417	Skyview ES	Unfunded		66th St N	Park Blvd	Regent Blvd							2	513	491	7	0		
417	Skyview ES	Perp.		US Hwy 19 N	106th Ave N	Mainlands Blvd	5539	15 5029 03/20/2019	104171	160	3564	D					0		
417	Skyview ES	Perp.		US Hwy 19 N	Gateway Blvd	82nd Ave	5539	15 5029 03/20/2019	104172	159	3565	D					0		
417	Skyview ES	Perp.		SR694/Park Blvd N	71st St n	44th St N	5939	15 5033 06/11/2018	114173	168	3666	C					2		
625	Southern Oak ES	Paral/Perp		SR688/Ulmerton Rd	101st St SE	Wild Acres Rd	6387	15 3032 2019	56251	1627	2505	C	5	465	141	0	19	no sdwlks, Starkey N of 122nd Ave., Ulmerton 4032 veh	
433	Starkey ES	Unfunded		SR694/Park Blvd N	Marathon Dr	79th St N	AADT 51500	15 5731 2016		1728			3	563	408	47	0		

Sch #	School Name	Haz Type	Comm	Hazard Street	Hazard From	Hazard To	Traffic Count (Per/Hr)	FDOT Station	Edulog Boundary ID	Hazard Code #	State Record ID	Gov. Entity	# bus	Student Count	<2 miles	Unfunded	funded	Comments	
433	Starkey ES	Paral.		Starkey Rd	Largo Lakes Blvd	94th Ave N	AADT 30000	15 9195 2016	74332	1794	3009	C					12	Ditches - Impaired walkpath - 45mph	
470	Walsingham ES	Paral/Perp		SR688/Ulmerton Rd	10th St SE	Coral Way	6387	15 3032 6/27/2018	114701	180	3667	C	4	375	93	0	3	no sdwlks, Starkey N of 122nd Ave, Ulmerton 4032 veh	
14	Largo MS	Unfunded		Donegan Rd	North of Donegan	Lake Ave SE	AADT 5500	15 9112 2018		139			11	933	289	4	0	heavy traffic, ditches, must walk in road at drain pipe	
225 & 226	Mad Beach Fund	NA											0	1314	182	0	0		
128	Morgan Fitz	NA											19	1122	242	0	0	US 19 flyover	
304	Osceola MS	NA											15	1079	283	0	0		
341	Pinellas Park MS	NA											14	1172	534	0	0		
208	Largo HS	NA											21	2235	713	0	0		
303	Osceola HS	NA											15	1760	126	0	0		
342	Pinellas Park HS	NA											29	2076	355	0	0	US19 flyover	
709 & 282	Pinellas Sec	NA											11	170	6	0	0		
NORTH COUNTY																			
37	Belleair ES	Unfunded		Court St	Memorial	S Keystone Dr	4258	15 5175 06/13/2018		1323			4	406	395	140	0	-	
313	Curtis Fund	NA											0	492	105	0	0		
107	Dunedin ES												3	435	422	0	0		
113	Eisenhower ES	Perp.		McMullen Booth Rd	Gulf to Bay Blvd	Oak Ridge Rd	4975	MPOstn10 29 10/30/2018	111131	184	3650	A	4	528	419	0	0		
113	Eisenhower ES	Unfunded		US Hwy 19 N	Harn Blvd	South Dr		US19service rd	51132	1595	2465	D				112	0	fly over on Drew & SR60	
113	Eisenhower ES	Unfunded		SR60/Gulf to Bay Blvd	US Hwy 19	Damasquis Rd	5275	15 0074 05/23/2018	51133	1597	2463	C				19	0	Unfunded 2017 - car counts	
318	Elisa Nelson ES	Perp.		US Hwy 19	Highlands Blvd	Bligore Grv Blvd	9469	15 5503	113	HZ113	HZ113		7	394	55	0	1		

Sch #	School Name	Haz Type	Comm	Hazard Street	Hazard From	Hazard To	Traffic Count (Per/Hr)	FDOT Station	Edulog Boundary ID	Hazard Code #	State Record ID	Gov. Entity	# bus	Student Count	<2 miles	Unfunded	funded	Comments	
134	Frontier ES	Perp.		Roosevelt Blvd	US 19 N	Bay Vista Dr	5715	15 0007 5/23/16	71343	1869	3253	D	4	604	441	0	123	Re-designated to Roosevelt Blvd from US 19 - 2017 Review	
134	Frontier ES	Perp.		SR686/East Bay Dr	Keene Rd	US Hwy 19 N	6163	15 5304 2019	81341	1645	3251	A				0	18		
134	Frontier ES	Unfunded		US 19	SR686/Roosevelt Blvd	SR688/Ulmerton Rd		US19flyover	91342	84						8	0	US19 flyover, south of Roosevelt	
148	Garrison Jones ES	Perp.		US Hwy 19 N	Winding Creek Blvd	Evans Rd	10029	15 0044 02/28/2018	101481	152	3557	D	4	548	283	0	0		
181	High Point ES	Unfunded		SR686/Roosevelt Blvd	49th St N	140th Ave N	3922	15 0035 2018		92			4	558	490	0	0	unfunded, peak AADT 51000 in 2008	
181	High Point ES	Perp.		SR686/Roosevelt Blvd	49th St N	Sawmill Ave	5715	15 5304 06/13/2018 15 0007 5/23/16		1642	1642					0	2	Declare 2017 - Car counts	
181	High Point ES	Unfunded		SR688/Ulmerton Rd	49th St N	Rogers Ave	5211	15 0105 06/12/2018		97	NA					0	0	pedestrian tunnel	
181	High Point ES	Unfunded		US Hwy 19 N	Ulmerton Rd	East Bay Dr		US19flyover		183	3656	D				2	0	fly over on East Bay/Roosevelt & 142nd Ave	
636	Kings Highway	NA											3	256	170	0	0		
99	Leila Davis ES	Unfunded		US Hwy 19 N	Main St	Republic Dr			50991	1651	2487	D	4	631	449	60	0	pedestrian bridge over US 19 at enterprise rd & Fly over at SR580	
99	Leila Davis ES	Perp.		McMullen Booth Rd	Los Prados Dr	Mil Ray Dr	4680	MPOstn10 29 10/30/2018	41917	256	2488	A					110	east side McMullen Booth	
230	McMullen Booth ES	Unfunded		US Hwy 19 N	CW 1st St	Stag Run Blvd			52302	1680	2493	D	4	417	244	54	0	UNFUNDED underpass at Sunset Pt and US 19 N.	
230	McMullen Booth ES	Perp.		McMullen Booth Rd	SR 580	Thomas Rd	4975	MPOstn10 29 10/30/2018	112303	170	3658	A					3		
292	Oakhurst ES	NA											3	597	440	0	0		
343	Plumb ES												2	617	527	0	0		

Sch #	School Name	Haz Type	Comm	Hazard Street	Hazard From	Hazard To	Traffic Count (Per/Hr)	FDOT Station	Edulog Boundary ID	Hazard Code #	State Record ID	Gov. Entity	# bus	Student Count	<2 miles	Unfunded	funded	Comments	
351	Ridgecrest ES	NA											8	572	326	0	0		
373	Safety Harbor ES	Perp.		McMullen Booth Rd	Booth Blvd	Kapok Terr.	4975	MPOstn1029 10/30/0218	93731	79	79	A	3	607	407	0	2		
385	San Jose ES	Unfunded		SR580/Skinner Blvd	Victoria Dr	Keene Rd	1994	15 5070 06/12/2018		246			3	230	171	34	0	Per Dr Grego due to intersection geometry	
387	Sandy Lane ES	NA											3	354	319	0	0		
412	Skycrest ES	NA											2	554	541	0	0		
73	Clearwater Fund MS	NA											0	787	132	0	0		
334	Clearwater Intermediate	NA											6	159	44	0	0		
109	Dunedin MS	NA											15	1045	425	0	0		
286	Oak Grove MS	Unfunded		east of US 19						485			12	929	402	0	0	east side split, Harn Blvd forced right at US 19	
286	Oak Grove MS	Unfunded		north of Gulf to Bay Blvd						248						111	0		
374	Safety Harbor MS	NA											17	1031	180	0	0	Need to look at adjustment to 2 mi that was done by Doug awhile ago. MAP	
108	Dunedin HS	NA											18	1304	340	0	0		
44	Brooker Creek ES	Unfunded		East Lake Rd	Arbor Oaks Dr	Crescent Oaks Blvd	3289	MPOstn1006 5/8/18	50441	18	2453	A	5	542	329	0	109		
44	Brooker Creek ES	Paral.		Keystone Rd	north side	East of Buffalo Run	1572	MPOstnMP03 3/6/18	50442	1442	2454	A					4	Ditches - 45mph-NS east of Buffalo Run	
244	Chi Chi Rodriguez Acsd.	Perp.		McMullen Booth Rd	Oakhaven Dr	Lake Cypress Dr	4153	MPOstnSC09 6/26/18	82441	1745	3268	A	5	60	2	0	1		
85	Curlew Creek ES	Perp.		US Hwy 19 N	Frontier Trl	297th Ave N	8460	15 0045 2/20/2018	50853	1586	2461	D	6	599	345	0	1		

Sch #	School Name	Haz Type	Comm	Hazard Street	Hazard From	Hazard To	Traffic Count (Per/Hr)	FDOT Station	Edulog Boundary ID	Hazard Code #	State Record ID	Gov. Entity	# bus	Student Count	<2 miles	Unfunded	funded	Comments	
85	Curlew Creek ES	Perp.		McMullen Booth Rd	SR 580	Boot Ranch Blvd S	4443	MPOstnSC 09 6/26/18	50854	1720	2457	A					57		
626	Cypress Woods ES	Perp.		East Lake Rd	Kensington Trace	Sandy Point Rd	5421	MPOstnMP 17 10/2/18	56261	1583	2462	A	8	678	295	0	144		
133	Forest Lakes ES	Perp.		Tampa Rd	E Lk Club Dr	Race Track Rd	6275	15 0063 3/20/2019	111331	171	3652	A	4	508	242	0	7		
178	Highland Lakes ES	Perp.		US Hwy 19 N	Beacon Grove Blvd	SC	9469	15 5503 3/19/19	130001	155	3658	D	4	487	244	0	0		
178	Highland Lakes ES	Perp.		US Hwy 19 N	Pine Ridge Way S	Nebraska Ave	9469	15 5503 3/19/19	101782	154	3559	D					0		
178	Highland Lakes ES	Perp.		US Hwy 19 N	West Lake Rd	Tampa Rd	9469	15 5503 3/19/19	130002	153	3790	D					0		
628	Lake St George ES	Perp.		US Hwy 19 N	Highlands Blvd	Boy Scout Rd	10029	15 0044 2/21/2019	56281	1631	2480	D	3	556	489	0	155		
296	Oldsmar ES	Perp.		Tampa Rd	Sunflower Dr	Race Track Rd	5715	15 0003 02/26/2018	112961	176	3659	A	3	541	326	0	2		
307	Ozona ES	Unfunded		SR595/Alt 19 N	Wexford Leas Blvd	Trade Winds Dr				1653			2	718	468	4	0	sidewalks installed 2017	
438	Sunset Hills ES	NA											1	413	291	0	0		
627	Sutherland ES	Perp.		US Hwy 19 N	Klosterman Rd	Coral Landings Blvd	9469	15 5503 2/26/18	106272	158	3563	D	1	551	458	0	7		
449	Tarpon ES	Unfunded		US Hwy 19 N	Sawgrass Dr	Sun Valley Blvd				1622			4	453	378	0	0	Trail under US Hwy 19	
449	Tarpon ES	Paral.		SR595/Alt 19 N	TS Plaza Dr	Dodecanese Blvd	1658	15 3002 02/20/2018	54491	1619	2541	C					37	impaired walk-deep ditches 45 mph	
449	Tarpon ES	Unfunded		N of Anclote River	W of US 19	E of Dixie Hwy										117	0	per Robin Wikle & Ward Kennedy	
53	Carwise MS	NA											22	1155	175	0	0	Need unfunded hazard on W side of US 19. MAP	
639	East Lake MS												7	392	157	0	0		
319	Palm Harbor MS	Unfunded		US19						1850			17	1114	452	59	0		
458	Tarpon Srpsngs MS	NA											14	720	138	0	0		
75	Countrysid e HS	NA											23	1846	309	0	0		
108	Dunedin HS	NA											18	1305	340	0	0		
618	East Lake HS	NA											28	2408	349	0	0		

STEPS Meeting Minutes for June 16, 2021

School Transportation & Enhanced Pedestrian Safety Committee
Wednesday, June 16, 2021 10:30 a.m. – 11: 30 a.m. WPSC or on Microsoft Teams

I. INTRODUCTIONS-ATTENDANCE

Mahshid Arasteh, Matt Atwell, Joe Camera, Rodney Due, Andy Hill, Sandra Kneobel, Tim Jacobson, Benn Lofton, James Long, Melissa Mehling, Judy Michalio, Casey Morse, Dawn Pecora, Norm Runkles, James Ryan, Susan Sams, Frances Leong Sharp, Marshal Touchton, Michael Ulbrich, Jeff Wasilewski, Ron Wolfson, Litianyu Zhu.

II. APPROVAL OF May 19, 2021 Meeting Minute

Jeff Wasilewski - approved, Melissa Mehling - seconded.

III. NEW GENERAL BUSINESS

- **Blanton ES, new car line** – Matt Atwell shared the plans for Blanton ES new car line with the STEPS committee. After discussion, we will work with the PCSO and change the times on the “No Turn” sign to extend before and after bell times. For an aerial of these modifications see attached pdf.
- **Sutherland, illegal turning out of school** -There is a “no left turn” that was not being observed. The PCSO is in the process of raising the median to restrict drivers from turning left.
- **Cabinet art wraps** – Beautiful artwork is being “wrapped” around traffic light control cabinets. These are very distracting. We do not want these in school zones. Mahshid Arasteh will try to get information from the FDOT from other school district, regarding the placement of this art in a school zone.
- **Crossing Guard** - Casey Morse made another plea for crossing guards. Please help others if you have more crossing guards than you are staffing.

IV. COMMITTEE BUSINESS/UPDATES

Melissa Melching will be leaving the SPPD Crossing Guard Supervisor position. Melissa has been a phenomenal help and dearly missed! In the interim, Ron Wolfson Officer SPPD will be handling St Pete’s crossing guard questions. He can be contacted at (727) 893-7141, Ronald.wolfson@stpete.org.

V. OLD GENERAL BUSINESS

Crash Data. 66 fatalities as of May 31, 2021. In comparison, total last year in same time period was 41 fatalities. There were 21 fatalities just last month (May 2021). For more detailed information see attached.

VI. NEXT MEETING/ADJOURNED

*** **July 21, 2021** at WPSC located at 11111 Belcher Road South, Largo
or “Microsoft TEAMS” at 10:30a.m.***

All STEPS meetings are scheduled for the 3rd Wednesday of the month

STEPS Meeting Minutes for July 21, 2021

School Transportation & Enhanced Pedestrian Safety Committee

Wednesday, July 21, 2021 10:30 a.m. – 11:30 a.m.

WPSC or on Microsoft Teams

I. INTRODUCTIONS-ATTENDANCE

Mahshid Arasteh, Elbo Bennett, Joe Camera, Andy Hill, Diana Joyner, Sandra Kneobel, Tim Jacobson, James Long, Judy Michalio, Casey Morse, Jerry Reynolds, Joan Rice, Norm Runkles, James Ryan, Susan Sams, Hailey Sequeira, Jeff Wasilewski, Autumn Westermann, Litianyu Zhu.

II. APPROVAL OF June 16, 2021 Meeting Minute

Norm Runkles – approved, Jeff Wasilewski - seconded.

III. NEW GENERAL BUSINESS

Mount Vernon's car circle will be changing the bus/car que. Signage will be added.

PCSO is requesting that schools use their marquee to help advertise the **DISPARTE need for Crossing Guard**. The sheriff's office is roughly 50+ understaffed, Clearwater, 35 crossing guards needed, and Largo is short 3 guards at this time. For the Sherriff office, the locations needing the most help are Bardmoor, Starkey, High Point, Lealman and the Seminole schools. The Sheriff's office and the City of Clearwater will send the verbiage to put on marquees. We will get approval and work with schools to advertise as much as possible.

Sandy Knoebel offered to ask Amy from Forward Pinellas to post the advertisement on their website. PCSO will touch base with the person responsible for social media.

Lealman ES – Pinellas County Commissioner has requested a mid-block crosswalk to be added to the west of the campus on 58th Ave. The school has concerns with drivers turning west out of the school. The is a site visit planned to further evaluate the situation.

Blanton ES – has switched the car circle with the bus lines. This will help the flow of traffic on 58th Street. The directional signs with be installed by Casey Morse when the work is complete.

IV. COMMITTEE BUSINESS/UPDATES

Schools with construction:

San Jose ES	Current - 8/21
St. Pete HS	Current - 9/21
Orange Grove ES	Current - 12/21
Midtown	Current - 8/22
Lakewood HS	Current - 1/23
Tyrone MS	Current - 4/23
Clearwater HS	Current - 9/23

V. **OLD GENERAL BUSINESS**

Crash Data – Please see attached documents for Crash Data or contact Sandra Knoebel at ForwardPinellas.org or (727) 464-5653

VI. **NEXT MEETING/ADJOURNED**

*** **August 18, 2021** at WPSC located at 11111 Belcher Road South, Largo
or “Microsoft TEAMS” at 10:30a.m.***

All STEPS meetings are scheduled for the 3rd Wednesday of the month

STEPS Meeting Minutes for August 2021

School Transportation & Enhanced Pedestrian Safety Committee

Wednesday, August 18, 2021 10:30 a.m. – 11:30 a.m.

WPSC or on Microsoft Teams

I. INTRODUCTIONS-ATTENDANCE

Mahshid Arasteh, Joe Camera, Andy Hill, Marvin Jefferson, Sandra Kneobel, Tim Jacobson, James Long, Judy Machalio, Melissa Mehling, Casey Morse, Jerry Reynolds, Joan Rice, Norm Runkles, James Ryan, Susan Sams, Michael Ulbrich, Litianyu Zhu.

II. APPROVAL OF July 21, 2021 Meeting Minutes

Norm Runkles and Jerry Reynolds approved minutes.

III. NEW GENERAL BUSINESS

Welcome Back

Melissa Mehling, St Pete Crossing Guard Supervisor!!

Pasadena Crossing guard/walk (Herbic/Ulbrich)

The following actions will be taken by the City of St Petersburg:

- Removal of (2) parking spaces, the first space to both the immediate
- > West and east of the crossing; and,
- > Installation of School Zone crossing signage, to include advance
- > Warning signs, speed limit fines signs, reduced school zone speed flashing
- > Assemblies, and end school zone signs.

Bauder Elementary (Elizabeth Gremal/Pecora) This TTSS regarding mid-block crossings (due to construction) was handled by the principal and is no longer a concern.

Frontier Elementary (Let's Talk/Pecora)

An on-going issue at Frontier ES has been brought up again through a TTSS, regarding the carline through the residential area. The parents are blocking driveways. This is an unincorporated area. Casey Morse is looking into signage for the area.

Curlew Creek (Morse)

During Ms. Morse's travels she noticed a younger boy (estimated to be 4-5th grade) crossing McMullen Booth Road alone.

Countryside High (TTSS/Morse)

There was a TTSS request for a crossing guard at SR 580 and McMullen Booth Road. This road was deemed Hazardous and will not have a crossing guard stationed there.

IV. COMMITTEE BUSINESS/UPDATES

V. **OLD GENERAL BUSINESS**

Crash Data

Please see August 2021 Crash Data sheet attached. The June and July Pinellas Trail usage report is also attached.

VI. **NEXT MEETING/ADJOURNED**

*** **September 15, 2021** at WPSC located at 11111 Belcher Road South, Largo
or "Microsoft TEAMS" at 10:30a.m.***

All STEPS meetings are scheduled for the 3rd Wednesday of the month

STEPS Meeting Minutes for September 2021

School Transportation & Enhanced Pedestrian Safety Committee

Wednesday, September 15, 2021 10:30 a.m. – 11: 30 a.m.

WPSC or on Microsoft Teams

I. INTRODUCTIONS-ATTENDANCE

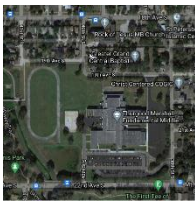
Mahshid Arasteh, Omar Atallah, Matt Atwell, Joe Camera, Russel Ferlita, Andy Hill, Sandra Kneobel, Judy Michaud, Melissa Mehling, Casey Morse, Chad Parker, Dawn Pecora, Jerry Reynolds, Joan Rice, Norm Runkles, James Ryan, Susan Sams, Hailey Sequeira, Marshal Touchton, Jeff Wasilewski, Autumn Westermann, Litianyu Zhu.

II. APPROVAL OF August 18, 2021 Meeting Minute

Approved by Norm Runkles, Seconded by Jerry Reynolds. (Added Dawn Pecora to minutes as Attendee from Augusts meeting.)

III. NEW GENERAL BUSINESS

Thurgood Marshall Bus/Car Circle change (Ulbrich)



The City of St Pete will install a (4) four-way stop on the Northeast corner. The Bus/Car parking lots have been switched.

Gulf Beaches ES/Car Circle request (Ulbrich) – a TTSS came in requesting for the “Safety” of the students, staff and residents the complaint would like all traffic on Blinds Pass Road and not in the neighboring streets. This has been immediately and unanimously Not Recommended by the Steps Committee.

Tyrone car line backing up on 66th Street (Atwell) – There is a proposed plan to go through the neighborhood instead of having the cars backed up on to 66th Street North.

Palm Harbor University (Morse) – 14th Street and New York Ave. Signs were put up, but parents are parking in front of the signs instead of following the directions on the signs. Electronic signs and a direct patrol to help the situation at PHU.

IV. COMMITTEE BUSINESS/UPDATES

Clearwater Academy – At Drew Street and Myrtle the school is request a school zone to be made by the corner of the property. These are not City Roads; Casey Morse will get with Tyson to discuss further.

Schools signs, Unenforceable – Norm Runkles stated that the school signs are un-enforceable if you do not have the schools’ times on the sign. Casey Morse is collecting information on what the FDOT states are the guidelines for enforceable signage. She will present this information at our next meeting. (October 2021)

Forward Pinellas – October 6, 2021, Sandra Knoebel would like to have information regarding the car lines and how they are going this year to discuss at the Forward Pinellas meeting. Casey Morse and Joan Rice will work on adding an agenda item to mention what was discussed in the STEPS meeting.

Changes – Norm Runkles reminded us that if changes at schools are going to be made, multiple people need to be involved in the decision-making process. Changes can't be just made by the school or the principal. The changes should be for the better.

V. **OLD GENERAL BUSINESS**

Pasadena Crossing guard/walk (Ulbrich) – No updates currently. Melissa Mehling will have more information for the October STEPS meeting.

Crash Data- Sandra Kneobel presented the crash data. We have attached that information to this email. Please contact her directly if more information is needed.

VI. **NEXT MEETING/ADJOURNED**

*** **October 20, 2021** at WPSC located at 11111 Belcher Road South, Largo
or “Microsoft TEAMS” at 10:30a.m.***

All STEPS meetings are scheduled for the 3rd Wednesday of the month